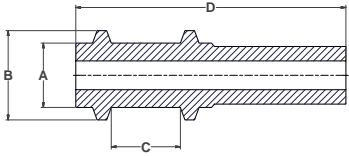


# MASKING PLUGS

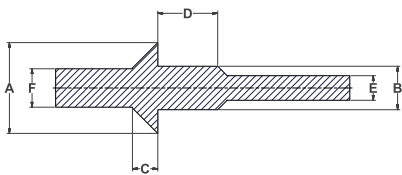
## DUAL FLANGED PULL PLUGS 600 °F (315 °C)



- Recommended for weld nuts
- Masks off chamfer, first thread and last thread

Part Number	Color	Thread Size	Imperial (in)				Quantity Per Bag
			A	B	C	D	
DFPP-M6	DARK GREEN	M6	0.197	0.307	0.268	1.299	1000
			5.00	7.80	6.81	32.99	
DFPP-M8	RUSTY RED	M8	0.264	0.374	0.311	1.339	1000
			6.71	9.50	7.90	34.01	
DFPP-M10	DARK GREEN	M10	0.335	0.445	0.354	1.378	500
			8.51	11.30	8.99	35.00	
DFPP-M12	PURPLE	M12	0.406	0.512	0.457	1.772	250
			10.31	13.00	11.61	45.01	
DFPP-M16	WHITE	M16	0.531	0.669	0.551	1.969	250
			13.49	16.99	14.00	50.01	
DFPP-M20	DARK BLUE	M20	0.669	0.827	0.709	2.283	100
			16.99	21.01	18.01	57.99	

## ULTRABAKE™ WASHER PULL PLUGS 600 °F (315 °C)



- Recommended for Powder Coating, E-Coating, Plating and Anodizing
- Ideal for threaded or non-threaded holes
- Dual purpose:
  - Pull through to mask hole and grounding area
  - Push in to mask hole and countersink area

Part Number	Color	Thread Size	Imperial (in)						Quantity Per Bag
			A	B	Metric (mm)		E	F	
UWPP-M3	DARK BLUE	M3	0.394	0.105	0.107	0.390	0.060	0.090	250
			10.00	2.67	2.72	9.91	1.52	2.29	
UWPP-M4	DARK GREEN	M4	0.394	0.140	0.107	0.390	0.080	0.120	250
			10.00	3.56	2.72	9.91	2.03	3.05	
UWPP-M5	CLEAR	M5	0.394	0.176	0.107	0.390	0.100	0.150	250
			10.00	4.47	2.72	9.91	2.54	3.81	
UWPP-M6	WHITE	M6	0.591	0.211	0.165	0.390	0.120	0.180	250
			15.01	5.36	4.19	9.91	3.05	4.57	
UWPP-M8	GREY	M8	0.591	0.283	0.165	0.390	0.161	0.240	250
			15.01	7.19	4.19	9.91	4.09	6.10	
UWPP-M10	YELLOW	M10	0.787	0.375	0.210	0.390	0.214	0.320	100
			19.99	9.53	5.33	9.91	5.44	8.13	
UWPP-M12	PINK	M12	0.787	0.428	0.210	0.390	0.244	0.360	100
			19.99	10.87	5.33	9.91	6.20	9.14	
UWPP-500	PINK	10-24	0.500	0.167	0.107	0.390	0.095	0.140	250
			12.70	4.24	2.72	9.91	2.41	3.56	
UWPP-562	YELLOW	12-24	0.562	0.193	0.107	0.390	0.110	0.160	250
			14.27	4.90	2.72	9.91	2.79	4.06	
UWPP-625	GREEN	1/4-20	0.625	0.225	0.107	0.390	0.128	0.190	250
			15.88	5.72	2.72	9.91	3.25	4.83	
UWPP-688	CLEAR	5/16-18	0.688	0.284	0.165	0.390	0.162	0.240	250
			17.48	7.21	4.19	9.91	4.11	6.10	
UWPP-812	GREY	3/8-16	0.812	0.342	0.165	0.390	0.195	0.290	100
			20.62	8.69	4.19	9.91	4.95	7.37	
UWPP-922	WHITE	7/16-14	0.922	0.400	0.210	0.390	0.228	0.340	100
			23.42	10.16	5.33	9.91	5.79	8.64	
UWPP-1060	DARK BLUE	1/2-13	1.060	0.459	0.210	0.390	0.262	0.390	100
			26.92	11.66	5.33	9.91	6.65	9.91	