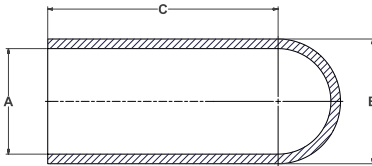


MASKING CAPS

VINYL CAPS 350°F (177°C)

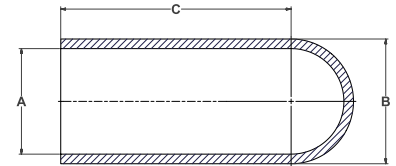


- Recommended for Painting, Plating and Anodizing
- Ideal for studs, slotted holes, tube ends and threaded holes
- Reusable
- High quality plastisol material
- High visibility color
- Custom sizes available

Part Number	Color	Imperial (in)			Quantity Per Bag
		Metric (mm)			
		A	B	C	
PS62C	BLACK	0.062	0.139	0.500	1000
		1.57	3.53	12.70	
PS80-0500C	YELLOW	0.080	0.180	0.500	1000
		2.03	4.57	12.70	
PS80C	BROWN	0.080	0.180	0.750	1000
		2.03	4.57	19.05	
PS93-0500C	RED	0.093	0.193	0.500	1000
		2.36	4.90	12.70	
PS93C	RED	0.093	0.193	0.750	1000
		2.36	4.90	19.05	
PS109-0500C	YELLOW	0.109	0.209	0.500	1000
		2.77	5.31	12.70	
PS109C	ORANGE	0.109	0.209	1.000	1000
		2.77	5.31	25.40	
PS125-0500C	YELLOW	0.125	0.225	0.500	1000
		3.18	5.72	12.70	
PS125C	YELLOW	0.125	0.225	1.000	1000
		3.18	5.72	25.40	
PS140-0500C	YELLOW	0.140	0.260	0.500	1000
		3.56	6.60	12.70	
PS140C	GREEN	0.140	0.260	1.000	1000
		3.56	6.60	25.40	
PS156-0500C	YELLOW	0.156	0.266	0.500	1000
		3.96	6.76	12.70	
PS156C	BLUE	0.156	0.266	1.000	1000
		3.96	6.76	25.40	
PS172-0500C	GRAY	0.172	0.272	0.500	1000
		4.37	6.91	12.70	
PS172C	GRAY	0.172	0.272	1.000	1000
		4.37	6.91	25.40	
PS187-0500C	YELLOW	0.187	0.287	0.500	1000
		4.75	7.29	12.70	
PS187C	BLACK	0.187	0.287	1.000	1000
		4.75	7.29	25.40	
PS203-0500C	YELLOW	0.203	0.313	0.500	1000
		5.16	7.95	12.70	
PS203C	BROWN	0.203	0.313	1.000	1000
		5.16	7.95	25.40	
PS218-0500C	YELLOW	0.218	0.328	0.500	1000
		5.54	8.33	12.70	
PS218C	RED	0.218	0.328	1.000	1000
		5.54	8.33	25.40	
PS234-0500C	YELLOW	0.234	0.344	0.500	1000
		5.94	8.74	12.70	
PS234C	ORANGE	0.234	0.344	1.000	1000
		5.94	8.74	25.40	
PS250-0500C	YELLOW	0.250	0.370	0.500	1000
		6.35	9.40	12.70	
PS250C	YELLOW	0.250	0.370	1.000	1000
		6.35	9.40	25.40	
PS281-0500C	GREEN	0.281	0.391	0.500	1000
		7.14	9.93	12.70	
PS312-0500C	BLUE	0.312	0.432	0.500	1000
		7.92	10.97	12.70	
PS312C	BLUE	0.312	0.432	1.000	1000
		7.92	10.97	25.40	
PS343C	GRAY	0.343	0.463	1.000	1000
		8.71	11.76	25.40	
PS375C	BLACK	0.375	0.505	1.000	1000
		9.53	12.83	25.40	
PS406C	BROWN	0.406	0.536	1.000	1000
		10.31	13.61	25.40	
PS437C	RED	0.437	0.567	1.000	1000
		11.10	14.40	25.40	
PS500C	ORANGE	0.500	0.610	1.000	500
		12.70	15.49	25.40	

VINYL CAPS 350 °F (177 °C)

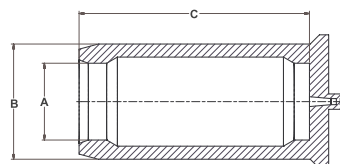
Part Number	Color	Imperial (in)			Quantity Per Bag
		A	B	C	
PS531C	YELLOW	0.531 13.49	0.646 16.41	1.000 25.40	500
PS562C	GREEN	0.562 14.27	0.682 17.32	1.000 25.40	500
PS625C	BLUE	0.625 15.88	0.745 18.92	1.000 25.40	500
PS687C	GRAY	0.687 17.45	0.807 20.50	1.000 25.40	500
PS750C	BLACK	0.750 19.05	0.880 22.35	1.000 25.40	500
PS812C	YELLOW	0.812 20.62	0.942 23.93	1.000 25.40	500
PS875C	ORANGE	0.875 22.23	1.005 25.53	1.000 25.40	500
PS937C	YELLOW	0.937 23.80	1.067 27.10	1.000 25.40	500
PS1000C	GREEN	1.000 25.40	1.130 28.70	1.000 25.40	500
PS1062C	BLUE	1.062 26.97	1.192 30.28	1.000 25.40	500
PS1125C	GRAY	1.125 28.58	1.255 31.88	1.000 25.40	500
PS1187C	YELLOW	1.187 30.15	1.317 33.45	1.000 25.40	500
PS1250C	BROWN	1.250 31.75	1.380 35.05	1.000 25.40	500
PS1375C	RED	1.375 34.93	1.505 38.23	1.000 25.40	500
PS1500C	BLACK	1.500 38.10	1.630 41.40	1.000 25.40	500
PS1625C	YELLOW	1.625 41.28	1.755 44.58	1.000 25.40	500
PS1750C	BLACK	1.750 44.45	1.880 47.75	1.000 25.40	500
PS1875C	YELLOW	1.875 47.63	2.005 50.93	1.000 25.40	500
PS2000C	YELLOW	2.000 50.80	2.130 54.10	1.000 25.40	500



- Recommended for Painting, Plating and Anodizing
- Ideal for studs, slotted holes, tube ends and threaded holes
- Reusable
- High quality plastisol material
- High visibility color
- Custom sizes available

ULTRABAKE VENTING CAP-PLUG™ 600 °F (315 °C)

Part Number	Color	Imperial (in)			Quantity Per Bag
		A	B	C	
UVCP234	YELLOW	0.234 5.94	0.450 11.43	1.000 25.40	250
UVCP355	GREEN	0.355 9.02	0.565 14.35	1.500 38.10	250
UVCP500	BLUE	0.500 12.70	0.750 19.05	1.500 38.10	100
UVCP1000	RUSTY RED	1.000 25.40	1.250 31.75	1.500 38.10	50



- Recommended for Powder Coating, E-Coating
- Designed to fit over studs and plug holes
- Unique design allows for venting, by either puncturing, slitting or simply pulling off the vent